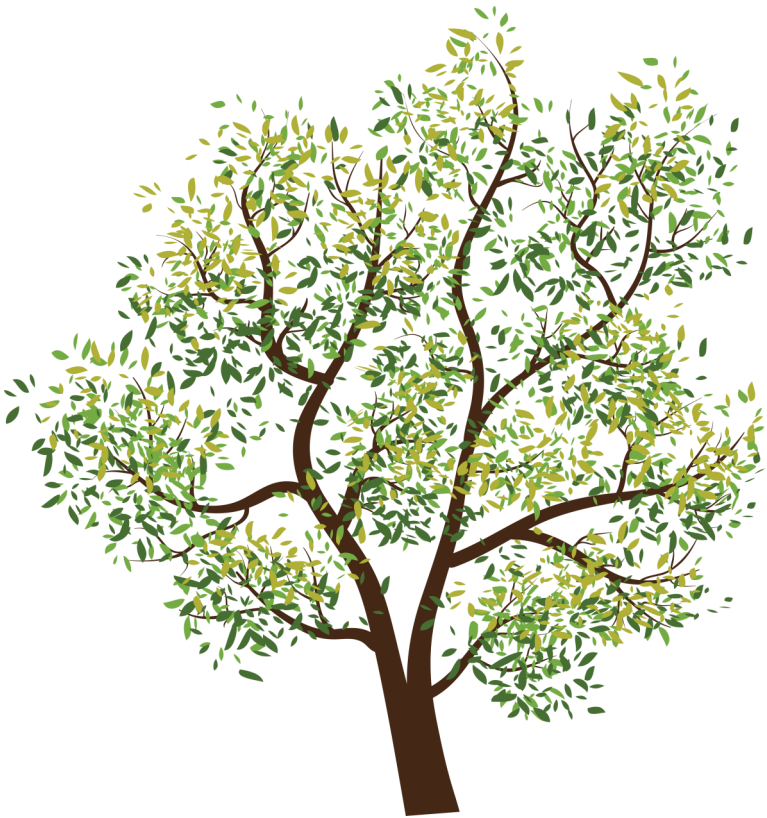


Winter 2025 Newsletter

Conservation Tree Seedling Sales



We are excited to announce our
2025 Conservation Tree
Seedling Season!

Orders are now open, reserve your
trees online or with an order form
available in our office or online.

Be sure to order your stock as soon
as possible—inventory is limited!
Delivery in May 2025

We are offering a variety of bareroot conifers, bareroot broadleaves, bareroot shrubs, container conifers, and select bareroot single trees. Bareroot stock is 12" to 36", including root ball, and offered in bundles of 25 trees. Container stock is 6" to 15", including root ball, offered in bundles of 10 trees. Container trees are grown in plugs and wrapped tightly in cellophane, preserving the root ball. Plug containers are re-used for next year's stock!

Contact us with questions or if you need help planning a windbreak

Upcoming Events

1/23: Lower South Platte Water Symposium

Hear from 4 different speakers on updates along the South Platte River Basin. Topics include Slough Restorations, Grant Funding, TAPs, Salinity, and the State of the South Platte.

Free and open to the public, RSVP by 1/19

2/15: 2025 Annual Meeting

Learn about updates from the District, and hear from 2 different speakers: Joe Frank, General Manager, Lower South Platte Water Conservancy District, and Chuck Miller, Auctioneers Miller & Associates

\$25/person or \$50/couple, RSVP by 2/7

Spring 2025: Tree Care & Planting Workshop

Join Jerry Miller from American Windbreaks to learn about proper tree care, planting techniques, and more! Date TBD

May 2025: Tree Delivery Day

Date TBD

May 2025: Cheatgrass Management Workshop

Date TBD

Follow us on Facebook @ MCDFortMorgan or join our newsletter for updates!



**SAVE
-THE-
DATE**

Take control of your farm or rural business! Join the 5-part workshop series **Annie's Project** to gain skills, connect with women in ag, and grow your success.

Workshop topics include:

- Financial analysis and statements
- Estate planning
- Commodity marketing
- Crop/farm/business insurance and more!

January 13, 20, 27 & February 1, 3, 2025

Register today at **morganc.edu/annie**

\$82 per person, includes access to all 5 workshops and meals!



Thank you to our sponsors!



Prohibition of Discrimination, Harassment or Retaliation: MCC employees and students shall not be subjected to unlawful discrimination and/or harassment on the basis of sex, gender, race, color, age, creed, national or ethnic origin, ancestry, physical or mental disability, familial status, veteran or military status, pregnancy status, religion, genetic information, gender identity, sexual orientation, or any other protected class or category under applicable local, state or federal law, in connection with employment practices or educational programs and activities. For more info, including where to direct inquiries, visit: <http://www.MorganCC.edu/about-mcc/legal-notices>.



Lower South Platte Water Symposium

WHEN: Thursday, January 23, 2025

WHERE: Knights of Columbus Hall, 421 S. 11th Street, Sterling, CO

Please RSVP: Madeline Morrison (970) 427-3358 morganconservationdistrict@gmail.com or Amber Beeson, (970) 571-5296, centennialcd1@gmail.com or Phil Brink, phil@brinkinc.biz, CCA Ag Water Network



8:30 Coffee and Welcome

9:00 Assessing Salinization across the South Platte River Basin

Professor Timothy Gates, CSU Dept. of Civil and Environmental Engineering

9:50 Funding for Ag Water Projects

Greg Peterson, Colorado Ag Water Alliance

10:20 BREAK

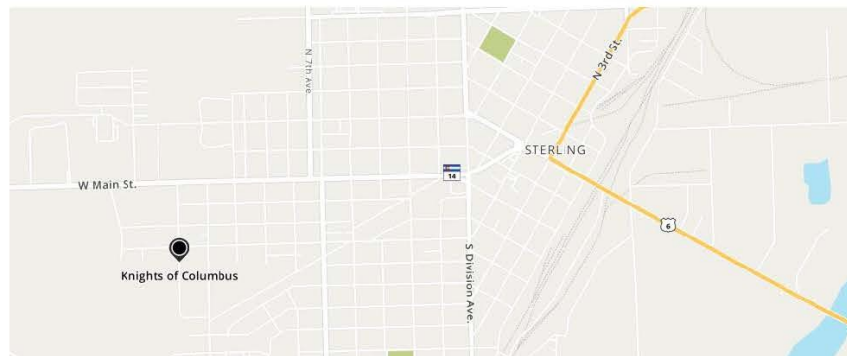
10:30 Farming for Profit with Minimal Water

Roy Pfaltzgraff, PFZ Farms, Haxtun, CO

11:40 Lower South Platte River Update

Joe Frank, GM, Lower South Platte Water Conservancy District

12:10 Lunch -- grab and go or stay and chat (Lunch sponsored by Centennial Conservation District)



YOU'RE INVITED!

Join us for our Annual Meeting! Learn more about District updates and programming and enter to win door prizes!

Featuring keynote speakers:

Joe Frank, General Manager, Lower South Platte Water Conservancy District

Chuck Miller, Auctioneers Miller & Associates

When: 5:30 p.m. – 8:30 p.m., Thursday, February 13th, 2025

Where: The Block, 19592 East 8th Avenue, Fort Morgan

Speakers start at 5:45 p.m. Dinner starts at 6:30 p.m.

\$25/person or \$50/couple

RSVP by February 7th to Madeline at 970-427-3358 or morganconservationdistrict@gmail.com

Morgan Conservation District
Providing Locally Led Support
since 1955

970-427-3358
morganconservationdistrict@gmail.com
200 West Railroad Avenue, Fort Morgan

Events that might interest you:

Pesticide Applicator Continuing Education Courses with Mountain West Pest

1/10: Online

1/22: Sterling

1/24: Fort Lupton

1/29: Greeley

2/14: Online

To learn more, visit <https://mountain-west-pest.square.site/> or contact Sandra McDonald at 970-266-9573 or Sandra@MountainWestPEST.com



The Colorado Farm Show takes place January 28th—30th this year! Learn about the latest ag technology, equipment, and services. Visit <https://coloradofarmshow.com>



High Plains No-Till Conference

February 4-5

Burlington, Colorado

Learn more about soil health, no-till, profitability, and more at the annual CCTA High Plains No-Till Conference!

Learn more at <https://highplainsnotill.com/>

Interested in treating noxious weeds holistically? We are excited to announce that we will be partnering with the Palisade Insectary to offer holistic biocontrol agents for common noxious weeds in the area. The Insectary grows and distributes biological controls to suppress noxious weeds and pests. Biocontrol's are an effective alternative treatment, especially for stubborn noxious weeds and pests.



We will be offering the biocontrol agents for the following weeds:

- Russian Knapweed
 - Bindweed
- Diffuse Knapweed
- Puncturevine

If you're interested in trying a new practice, contact us today to learn more! You can reach Madeline at 970-427-3358 or morganconservationdistrict@gmail.com

Learn more about the Insectary and their biocontrol agents at <https://ag.colorado.gov/conservation/biocontrol-at-palisade-insectary>



BIOLOGICAL CONTROL



A sustainable approach to pest management that utilizes the natural enemies of noxious weeds or pests

Inundative



Conservation



Classical



CLASSICAL BIOLOGICAL CONTROL

The purposeful introduction of natural enemies of non-native pest species

- Agents used may be herbivores, predators, pathogens, parasitoids or competitors
- Provides suppression not eradication
- Restores ecological balance to allow native species to compete

International Code of Best Practices for Biological Control

- Ensure target weed's potential impact justifies release of non-endemic agents
- Obtain multi-agency approval for target
- Select agents with the potential to control the target weed
- Release safe and approved agents
- Ensure only the intended agent is released
- Use appropriate protocols for release and documentation
- Monitor impact on the target plant species
- Stop releases of ineffective agents, or when control is achieved
- Monitor impacts on potential non-target species
- Encourage assessment of changes in plant and animal communities
- Monitor interactions among agents
- Communicate the results to the public

Approval for New Agents to U.S.

- Identify Potential Agents and Submit Plan to Technical Advisory Group (TAG) with USDA
- Host Specificity & Preference Tests Abroad and in the US (In Quarantine)
- Petition Prepared by Scientists and Reviewed by TAG to Make Recommendations
- USFWS consulted on Endangered Species Impacts
- Consultation with Indigenous Groups for Impact
- Petition Open to Public Comments and Environmental Findings Shared
- USDA APHIS PPQ Issues Permit

Approval may take decades!

Successful biological pest control reduces production costs, decreases the amount of chemicals entering the environment, and establishes colonies of beneficial insects offering a natural permanent pest control solution.

Palisade Insectary

CDA's Palisade Insectary is a scientific facility dedicated to the research, implementation, monitoring, and education for classical biological control

**FOUNDED
1945**

August 14, 1945, the Palisade Insectary became one of the first government funded programs for biological control in the United States.

ORIGINAL BUILDING



**27
CURRENT
AGENTS**

Current Biological Control Agents

The Insectary studies, rears, collects, distributes and monitors 27 biocontrol agents across 14 noxious weed and 3 insect pest programs

CYPHOCLEONUS ACHATES



**90
TOTAL
AGENTS**

Over 75 Years of Continuous Service

The Palisade Insectary has worked with over 90 species of biological controls since 1945. We are an institution of first choice for new biological controls in the Western US

YST AGENT APPROVED 2019



**REQUEST-
A-BUG**

Over 2,000 Requests for Biocontrol Per Year

The Request-A-Bug program provides biological controls to Colorado residents and serves over 2,000 requests each year providing over 1.5 million agents

APHTHONA SPP. FOR LEAFY SPURGE CONTROL



**GRANTS &
PARTNERS**

Federal Grants and Regional Partnerships

The Palisade Insectary consistently receives federal grants and has partnerships with BLM, USFS, USDA, EPA, many Western states, and research universities

INTERAGENCY TRIP IN CA





Seeking applicants for the Morgan Conservation District Manager
This is a part-time, contract position with flexible hours. Some week-nights and weekends required. Primary responsibilities include bookkeeping, program management, and coordinating conservation outreach events.

Qualifications include:

- Quickbooks (1+ years)
- Microsoft Office (1+ years)
- Customer Service (1+ years)
- Office Management (1+ years)

To apply, send in your resume with at least two references to:

morganconservationdistrict@gmail.com **OR**

200 West Railroad Avenue, Fort Morgan, CO 80701

Full job description available at <https://www.indeed.com/viewjob?jk=72ff6183d96a7565&from=shareddesktop>



We are now accepting applications for our annual scholarship program. This program is open to local college freshman and high school seniors pursuing an agriculture or natural resources-based degree or certificate program. For more information, visit our website at www.morganconservationdistrict.com/college-scholarships or contact us via email at morganconservationdistrict@gmail.com

Applications are also available in the office

Grass Seed Sales

Did you know that we offer grass seed for sale? Seed can be used for CRP, pollinator plantings, or general erosion control and cover. We work with a local grass seed dealer to ensure timely delivery of all mixes. If you are interested in ordering a custom or pre-made mix, please contact our office!



Benefits of planting Grass Seed:

- Erosion Control
 - Ground cover, especially with hardy, native grasses, can protect your soil from the elements. Native species often have deeper roots, and help keep topsoil and nutrients in the ground.
- Improve Air Quality
 - Increased oxygen production and air quality is a benefit for any planting
- Wildlife Habitat
 - Growing native plants and grasses creates a welcoming environment for any wildlife in the area. Grass seed mixes can be targeted specifically for pollinator plantings too! Tree windbreaks are also a great tool for improving and providing wildlife habitat
- Absorb carbon emissions
 - Healthy soils and plants help with the natural process of carbon sequestration—which helps in reducing carbon emissions

Contact us today to learn more about how grass seed might benefit you!

About the Conservation Stewardship Program

Conservation Stewardship Program (CSP) is one of the many programs the Natural Resource Conservation Service (NRCS) offers. This program assists farmers and ranchers with financial incentives to improve conservation efforts on the land that they operate for five years. CSP is available to both large-scale and small-scale producers. Eligible land receives a baseline payment on top of the incentive payment the producer selects to implement. Producers may select from the many conservation practices, enhancements, or bundles that NRCS offers under CSP.

The Morgan and Centennial Conservation districts will be hosting an informative meeting for local producers to learn more about the program at a later date. The districts are considering having a producer panel of participants currently enrolled in CSP to share their experience with the program. NRCS staff will also be there to provide information and answer questions. Those interested are encouraged to attend.

If you have any further questions regarding the CSP program or signup periods, please contact our office at 970-867-8568 ext. 3 or visit <https://www.nrcs.usda.gov/programs-initiatives/csp-conservation-stewardship-program>



Natural Resources Conservation Service

FORT MORGAN SERVICE CENTER 200 W RAILROAD AVE FORT MORGAN, CO 80701-2324

Phone: (970) 867 - 8568 Fax: (970) 867 - 9410

USDA is an equal opportunity provider, employer, and lender.



Cost Share Boundary Fence to Graze Expired CRP

Grazing to Sustain Grasslands

Bird Conservancy of the Rockies and USFWS Partners for Fish and Wildlife are partnering with landowners to help transition exiting acres from the Conservation Reserve Program (CRP) into a managed grazing system. We are offering a voluntary cost share program on the eastern plains of Colorado to help landowners purchase materials for boundary fence and/or water tanks to facilitate a managed grazing system on expired CRP pastures. Managed grazing supports livestock operations, rangeland health, and creates excellent habitat for grassland birds and other wildlife.

Benefits of Partnering

- Receive **70% cost share, up to \$22,000** per project for boundary fence materials and/or removable water tanks, and wildlife ladders, to implement managed grazing on expired CRP
- Boundary fencing increases eligibility to enroll with Farm Bill programs for further financial and technical assistance
- Improved ranch viability through a long-term grazing plan on expired CRP pastures
- Managed grazing creates excellent habitat for grassland birds and other wildlife.



Pair on the eastern plains, Photo by Rachel Belouin



Lark Bunting, Colorado State Bird, Photo by Ryan Parker

Qualifications



Wildlife-friendly fence for livestock and safe wildlife passage. Photo courtesy of NFWF

- Must currently own expired CRP field
- Collaboration on a 10 – year grazing plan for the CRP pasture(s)
- Installation of wildlife-friendly fencing for entire boundary area
- Compliance with NEPA & cultural clearances
- Allow wildlife biologist to conduct seasonal nesting survey prior to fence installation and photo monitoring after install, every 3-5 yrs.

This voluntary program requires landowner(s) to purchase materials and undergo cultural and NEPA clearances conducted by USFWS. Reimbursements will be paid after site inspection of completed work and within 30 days of Bird Conservancy receiving the funds from its grantor, the National Fish and Wildlife Foundation. All boundary fence must be installed by September 30, 2023 to receive reimbursement. This offer is for **supplies and materials only** and does not include the cost of labor.

Connecting People, Birds and Land
www.birdconservancy.org

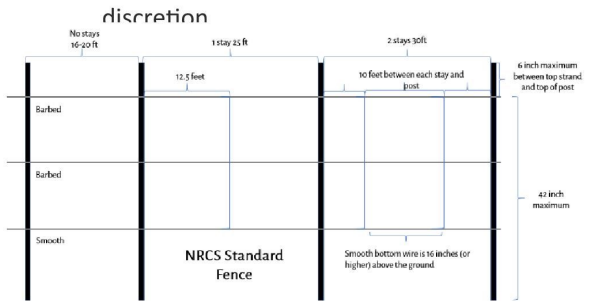


Cost Share Boundary Fence to Graze Expired CRP

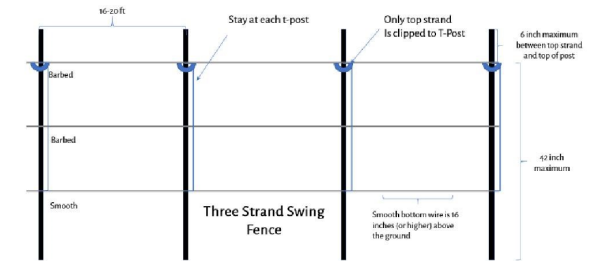
Fence Options and Specifications

Bird Conservancy and PFW collaborated with ranchers to design and select 6 cattle tested wildlife-friendly fences. Each fence is durable, proven to be low maintenance, visible to wildlife, and flexible for wildlife and debris to move across rangelands while containing cows, calves, and bulls.

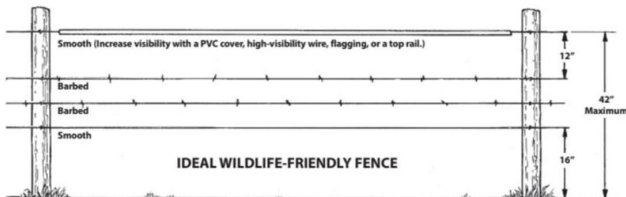
- All fence options have a smooth bottom wire at least 16 inches off the ground with the top wire at 42 inches or lower; wooden posts are trimmed to 48 inches or lower; braces should be placed every ¼ mile
- Select at least 12.5-gauge wire; 14-gauge for barbed; and 16-gauge or higher for ties
- Select new wire for 950 lbs. or 70,000 PSI
- Other fence materials and design decisions, including line posts and H-braces, are up to landowner discretion



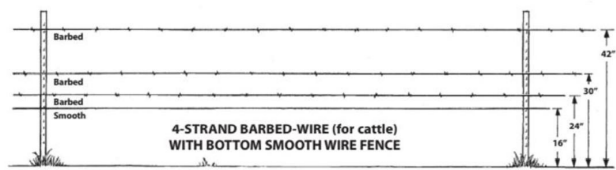
Option 1: NRCS wildlife-friendly fence with smooth bottom strand and top strands barbed



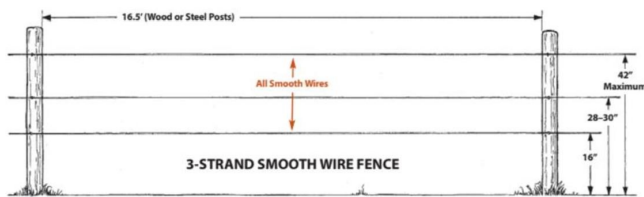
Option 2: Three strand wildlife-friendly swing fence with smooth bottom strand, top strands barbed (developed to allow tumbleweeds and debris to pass)



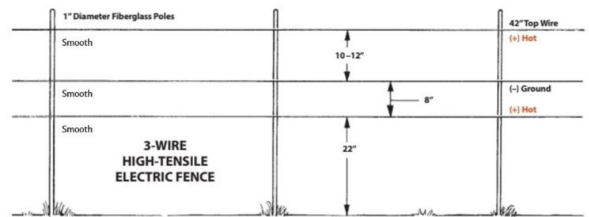
Option 3: Colorado Parks and Wildlife, wildlife-friendly fence with top strands smooth, middle strands barbed, and top strand with high visibility



Option 4: Colorado Parks and Wildlife, wildlife-friendly fence with smooth bottom strand and top strands barbed



Option 5: Colorado Parks and Wildlife, wildlife-friendly fence will all strands smooth



Option 6: Colorado State Parks and Wildlife, wildlife-friendly fence (suitable for bulls)

Contact Information

For more information or to enroll, contact Trent Delahanty at trent.delahanty@usda.gov/ 719-254-7673 ext. 3022 for southeast, CO or Renea Wilson at renea.wilson@usda.gov/ 970-427-3350 for northeast, CO.

Connecting People, Birds and Land
www.birdconservancy.org